

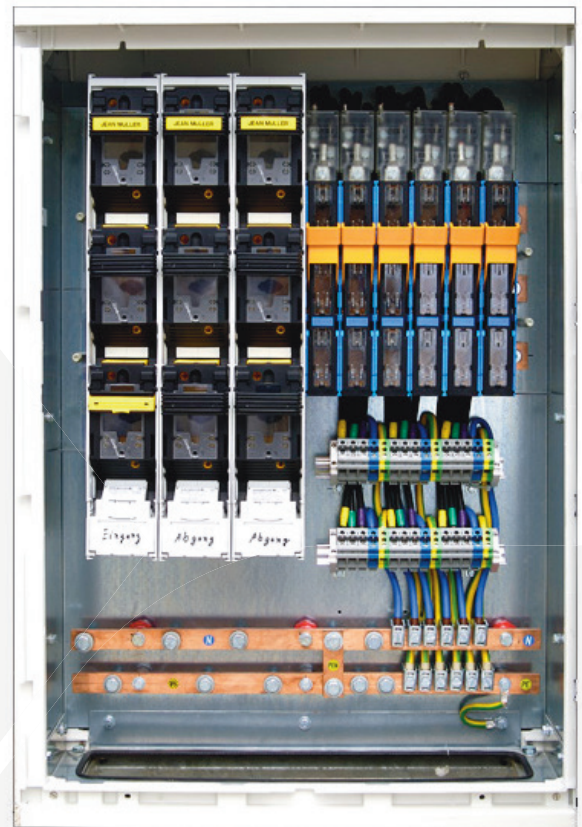
Power distributor EVS 3

Einspeisung: 1 x fused load break switch NH3 / 630 A

Abgänge: 2 x fused load break switches NH2 / 400 A
6 x fused load break switches NH00 / 160 A
attached to 35 mm² connection terminals

Details: Plastic standing distribution casing
with permanently attached stand
Ingress protection rating: IP 44
Size H x W x D in mm: 1,320 x 780 x 320
Weight: approx. 106 kg
Cable inlets: underneath

Extras: TN-C or TN-S mains available
Distribution cabinet is lockable



Other distributors



Power distributor 1,000 A